

# SPEC SHEET + MEASUREMENTS

**PORT&CO.**

Port & Co™ Core Fleece Crewneck Pocket Sweatshirt.  
PC78PKT

## Product photo



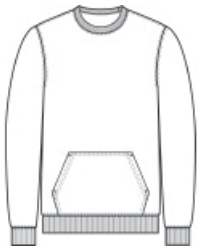
You asked. We listened. Now a cozy crew sweatshirt with a pocket in our core weight.

- 7.8-ounce, 50/50 cotton/poly fleece
- Air jet yarn for softness
- Front pouch pocket
- Tear-away label

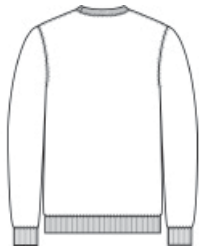
### CARE INSTRUCTIONS

Machine Wash Cold. Do Not Bleach. Tumble Dry Low. Cool Iron If Necessary.

## Sketches



front



back

# SPEC SHEET + MEASUREMENTS

**PORT&CO.**

Port & Co™ Core Fleece Crewneck Pocket Sweatshirt.  
PC78PKT

## PRODUCT MEASUREMENTS

	S	M	L	XL	2XL	3XL	4XL
Body Length at Back	27 1/2	28 1/2	29 1/2	30 1/2	31 1/2	32 1/2	33 1/2
Chest	20	22	24	26	28	30	32
Sleeve Length from Center Back	34 1/2	35 1/4	36	36 3/4	37 1/2	38 1/4	39

**Body Length at Back:** Measured from high point shoulder to finished hem at back.

**Chest:** Measured across the chest one inch below armhole when laid flat.

**Sleeve Length from Center Back:** Measure from Center Back neck to shoulder point to sleeve hem.

## SIZE CHARTS

	XS	S	M	L	XL	2XL	3XL	4XL
Chest	32-34	35-37	38-40	41-43	44-46	47-49	50-53	54-57

# SPEC SHEET + MEASUREMENTS

**PORT&CO.**

Port & Co™ Core Fleece Crewneck Pocket Sweatshirt.  
PC78PKT

## HOW TO MEASURE



### CHEST

Measure under the arm and around the fullest part of the chest with arms down, keeping tape horizontal.

## COLORS



Ash



Athletic Heather  
PMS COOL  
GRAY 7C



Dark Heather  
Grey  
PMS 7540C



Jet Black  
PMS BLACK  
C



Oatmeal  
Heather



Olive Drab  
Green  
PMS 7771C



Pale Blush  
PMS 5025C

PalePink



Red  
PMS 200C



SGreen



True Navy  
PMS 533C



True Royal  
PMS 7687C



White